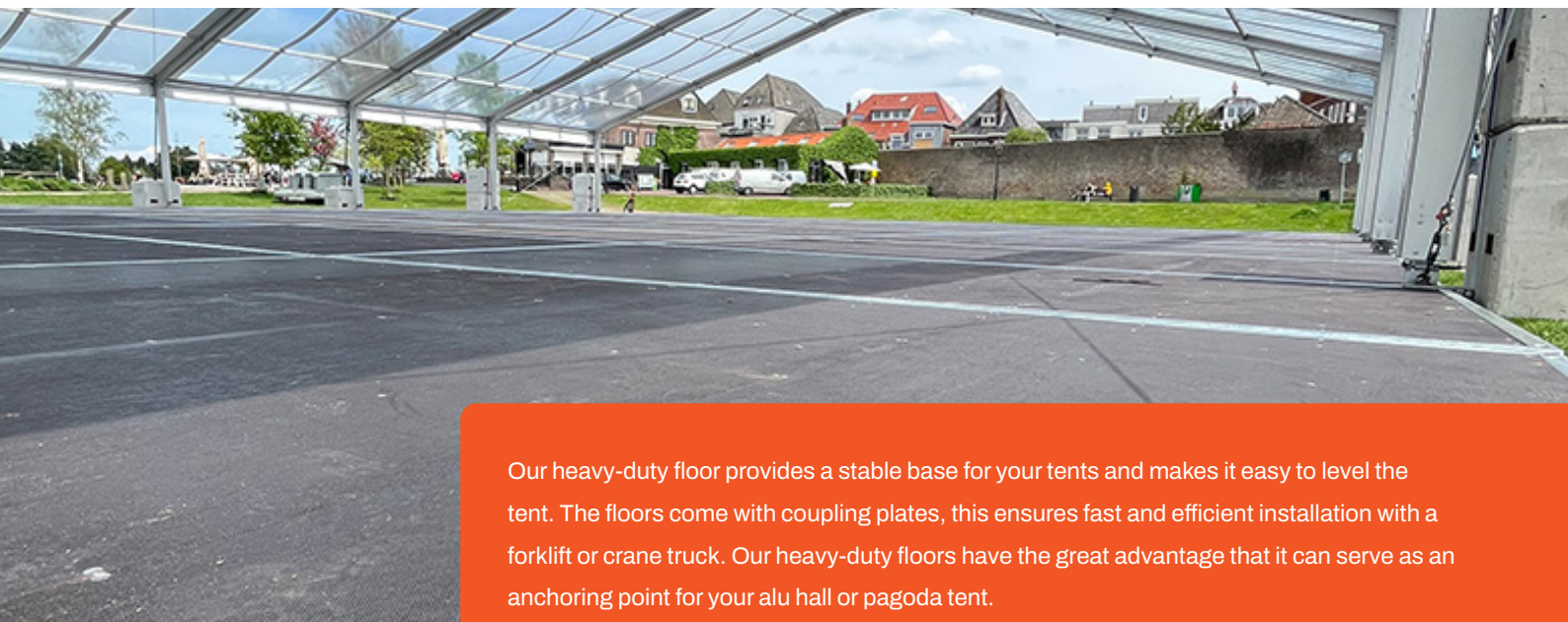


Heavy-duty floor

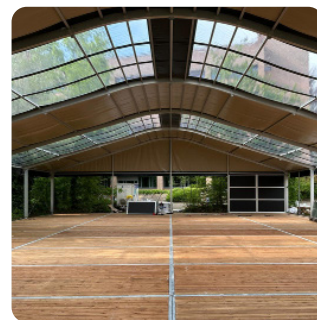


Tent Trading
We engineer. We produce.



Our heavy-duty floor provides a stable base for your tents and makes it easy to level the tent. The floors come with coupling plates, this ensures fast and efficient installation with a forklift or crane truck. Our heavy-duty floors have the great advantage that it can serve as an anchoring point for your alu hall or pagoda tent.

Customers appreciate the heavy-duty floor because of its robust construction and long service life. Thanks to the high-quality materials, the floor lasts more than 10 years, even when used intensively. We usually have large stocks in various designs.



These floor types are widely used for:



Trade fairs & conferences



Evenements



Showrooms



Horeca



Retail spaces



VIP areas



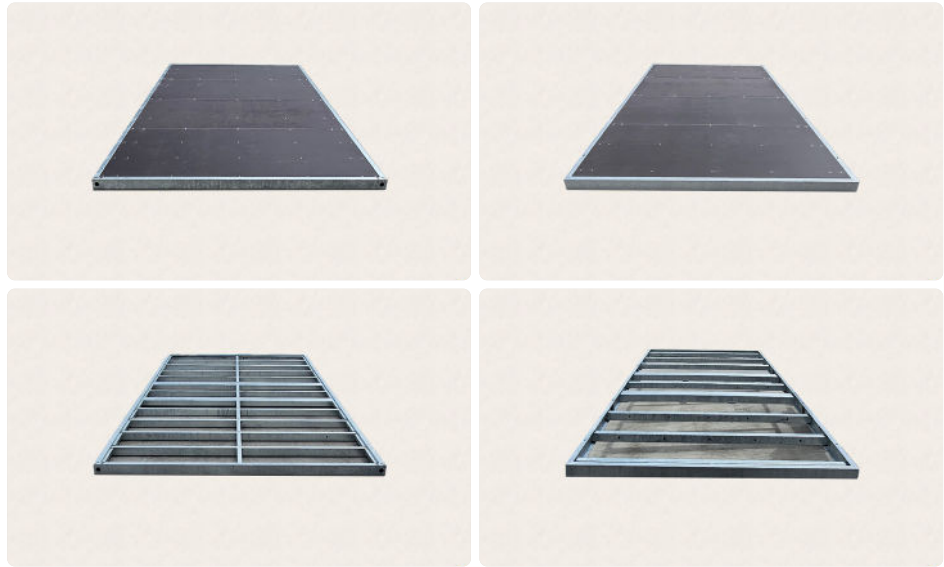
Festivals



Weddings



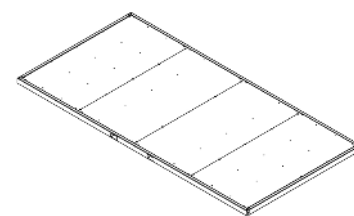
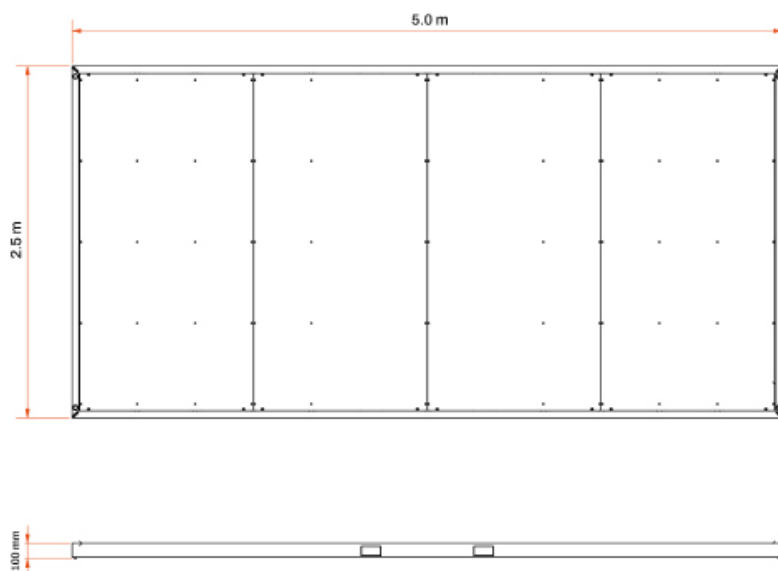
Heavy-duty floor



Compare our floor types

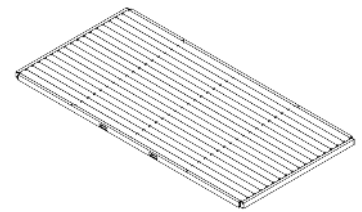
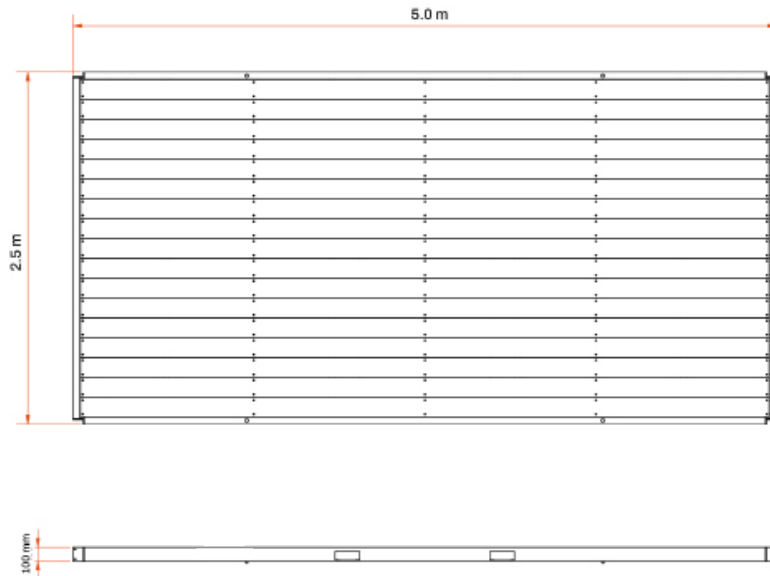
| | Tube100 Page 3 | UNP100 Page 4 |
|-------------------------------------|---|--|
| Dimensions per floor section | 2.5 m x 2.5 m 5.0 m x 2.5 m 5.05 m x 2.5 m | 5.0 m x 2.5 m 10 m x 2.5 m |
| Weight per floor section | 420 kg | 525 - 888 kg |
| Height | 100 mm | 100 mm |
| Payload | 350 kg/m ² - 585 kg/m ² | 350 kg/m ² - 585 kg/m ² |
| Steel | Galvanised | Galvanised |
| Material from | Non-slip concrete plywood Spruce planks | Non-slip concrete plywood Spruce planks |
| Additional options | Pivot bushings Powder-coated frames Ramp plate | Pivot bushings Powder-coated frames Ramp plate |
| Benefits | <ul style="list-style-type: none"> ✓ Available in 3 sizes ✓ Easy to assemble with a forklift truck ✓ Meets European quality requirements | <ul style="list-style-type: none"> ✓ Available in 2 sizes ✓ Easy to assemble with a forklift truck ✓ Meets stricter German quality requirements |

Tube100



| Tube100 floors Non-slip concrete plywood or spruce planks | | | |
|---|--|--|--|
| | 5.05 m x 2.5 m Popular | 5.0 m x 2.5 m | 2.5 m x 2.5 m |
| Dimensions per floor section | 5.05 m x 2.5 m | 5.0 m x 2.5 m | 2.5 m x 2.5 m |
| Weight per floor section | 420 kg | 420 kg | 210 kg |
| Height | 100 mm | 100 mm | 100 mm |
| Load bearing with 6 support points | 350 kg/m ² | 350 kg/m ² | 350 kg/m ² |
| Load bearing with 8 support points | 585 kg/m ² | 585 kg/m ² | 585 kg/m ² |
| Steel | Galvanised | Galvanised | Galvanised |
| Material | Non-slip concrete plywood Spruce planks | Non-slip concrete plywood Spruce planks | Non-slip concrete plywood Spruce planks |

UNP100



| UNP100 floors Non-slip concrete plywood or spruce planks | | |
|--|---|---|
| | 5.0 m x 2.5 m Popular | 10.0 m x 2.5 m |
| Dimensions per floor section | 5.0 m x 2.5 m | 10.0 m x 2.5 m |
| Weight per floor section | 525 kg | 888 kg |
| Height | 100 mm | 100 mm |
| Load bearing with 6 support points | 350 kg/m ² | 350 kg/m ² |
| Load bearing with 8 support points | 585 kg/m ² | 585 kg/m ² |
| Steel | Galvanised | Galvanised |
| Material | Non-slip concrete plywood Spruce planks | Non-slip concrete plywood Spruce planks |

Product list of additional options for heavy-duty floors

TT64



Connector



Foot adapter

TT84



Connector



Foot adapter

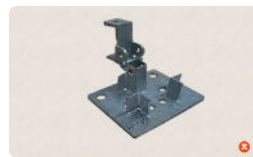
TT110



Connector



Foot adapter

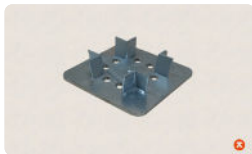


Gable foot adapter



False gable foot adapter

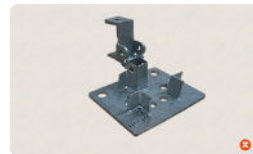
TT160



Connector

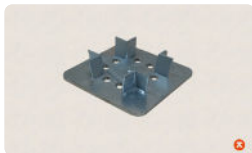


Foot adapter



Gable foot adapter

TT170



Connector



Foot adapter



Gable foot adapter right



Gable foot adapter left

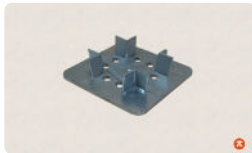


False gable foot adapter left



False gable foot adapter right

TT225



Connector



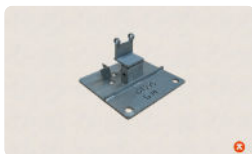
Foot adapter



Gable foot adapter left



Gable foot adapter right



Gable foot adapter centre